

Hygienic Solutions MMA Resins

Specialist in Hotel & Food Service Flooring
Naturally Anti-Bacterial Wall Coatings
Hygienic Kitchens
B.O.H Areas
Car Parks



Hygienic Solutions
MMA Resins



UAE OFFICE
KIZAD, Abu Dhabi, PO Box 126886
Email: info@HygienicMMAResins.com
Phone: +971 2 884 5673
+971 (0) 58 545 0014

www.HygienicMMAResins.com

Hygienic Solutions MMA Resins provides hard wearing, durable, flexible, 100% seamless flooring and hygienic wall systems. HS systems comply with UAE municipality regulations for food and hygiene to give a full hygienic seamless room with no joints. HS MMA is manufactured in Germany and kept in stock in the UAE.

Hygienic Solutions MMA resins flooring performance against Epoxy and Polyurethane is unrivaled and we offer up to 10 year guarantees on both materials and application, not a back to back guarantee like most manufacturers.

Methyl Methacrylate Resin (MMA) was invented in around 1965. The prime use for MMA was as a modifier for PVC, another application was as a cement for total hip and knee replacements by surgeons, it is used to fix bone to bone, which is still used today. Over the last 50 years MMA has been developed for wall and floor coatings due to its natural anti-bacterial properties, no VOC's and it has no Isocyanates which are harmful to mankind causing asthma and possibly cancer.

Over the last 6 years we have completed over 200 projects from hotels, schools, restaurants, factories and theme parks.

Because of the quality of our service and application we are now the preferred supplier for all of Accor hotels, Safeer Group, Wyndham group, Rove Hotels, Vida Hotels, Carrefours and Lulu. In addition to this Hygienic Solutions MMA Resins are the recommended flooring and wall system solution for the majority of Kitchen consultants including; Tricon, SHW, Focus, IO Consultancy, HPG, HCTS and I4 Consultancy.

HYGIENIC SOLUTIONS MMA RESIN COMPARISON AGAINST EPOXY RESINS, POLYURETHANE RESINS & CERAMIC TILES

PROPERTIES	HYGIENIC SOLUTIONS MMA RESIN	EPOXY RESIN	POLYURETHANE RESIN	CERAMIC TILES
WALK ON DRY FLOORS	15 MINUTES	24 HOURS	24 HOURS	24 HOURS
FULLY CURED FLOOR SYSTEM	1 HOUR	UP TO 14 DAYS (AMBIENT TEMPERATURE)	UP TO 14 DAYS (AMBIENT TEMPERATURE)	DEPENDS ON BONDING AGENT USED
WORK ON FLOOR (EQUIPMENT IN)	1 HOUR	AFTER CURING UP TO 14 DAYS	AFTER CURING UP TO 14 DAYS	3 DAYS DEPENDING ON BONDING AGENT USED
100% SEAMLESS	YES, 100% SEAMLESS	NO, REQUIRES SEALANTS AROUND DRAINS, JOINTS ETC.	NO, REQUIRES SEALANTS AROUND DRAINS, JOINTS ETC...	NO, REQUIRES SEALANTS AROUND DRAINS, JOINTS ETC..
100°C HIGH TEMPERATURE	YES, ACHIEVES 100°C TEMPERATURES @ 4MM THICK	NO, ONLY 60°C MAX	9MM & 12MM THICK ONLY, 4MM ACHIEVES 70° AND 6MM ACHIEVES 80°	YES, ACHIEVES 100° C
-35° C LOW TEMPERATURE	YES, -35°C @ 4MM	DEPENDS ON THICKNESS	-35°C @ 9MM	NO, WILL DE-BOND
HIGH IMPACT LOADS	YES, NATURAL STONE TAKES HIGH IMPACT, COLOURED QUARTZ	NO, TOO HARD @65-70N/MM2 TOO BRITTLE, WILL CHIP AND BREAK	YES @ 9MM AND 12MM THICK.	NO, TOO BRITTLE, WILL CRACK AND CHIP
STEAM CLEANABLE	YES, @ 4MM THICKNESS	NO, WILL CRACK	YES @ 9MM AND 12MM THICK ONLY	NO, GROUT WILL BLAST OUT
NATURAL ANTI-BACTERIAL	YES, INDEPENDENTLY TESTED	NO, REQUIRES ADDITIVES	NO REQUIRES ADDITIVES	NO REQUIRES ADDITIVES
THERMAL COEFFICIENT EXPANSION DRAINS	YES, WILL MOVE WITH STAINLESS STEEL DRAINS AND GULLIES	NO, REQUIRES SEALANT AROUND DRAINS AND GULLIES	NO REQUIRES SEALANT AROUND DRAINS AND GULLIES	NO REQUIRES SEALANT AROUND DRAINS AND GULLIES
THERMAL SHOCK TEMPERATURE DIFFERENCE FLOOR TO ROOM AIR	HYGIENIC SOLUTIONS MMA RESIN TAKES THERMAL SHOCK	NO, WILL CRACK AND DELAMINATE	YES, TAKES THERMAL SHOCK	YES TAKES THERMAL SHOCK
CHEMICAL RESISTANCE FOOD ACIDS	EXCELLENT RESISTANCE	VERY POOR	POOR	POOR RESISTANCE DUE TO GROUT
CHEMICAL RESISTANCE ORGANIC ACIDS	EXCELLENT RESISTANCE	POOR RESISTANCE	POOR RESISTANCE	POOR RESISTANCE DUE TO GROUT
DIFFERENT SLIP RESISTANCE WITHOUT JOINTS	YES, BY INCREASING THE SEALER COATS ACHIEVES DIFFERENT SLIP	NO, REQUIRES JOINTS OR BREAKS WHICH MEANS MORE SEALANT	NO, REQUIRES JOINTS OR BREAKS WHICH MEANS MORE SEALANT	YES, JUST CHANGE THE TILE TYPE
NO SEALANTS AS PART OF SYSTEM	NO SEALANTS ARE PART OF HYGIENIC SOLUTIONS MMA SYSTEM, (FREEZERS ONLY)	YES, REQUIRES SEALANTS	YES, REQUIRES SEALANTS	YES, REQUIRES SEALANTS
MANUFACTURED APPLIED	YES, APPLIED DIRECTLY	NO, APPLIED BY APPLICATORS	NO, APPLIED BY APPLICATORS	NO, APPLIED BY APPLICATORS
GUARANTEE'S DIRECT FROM MANUFACTURER	YES, GUARANTEED DIRECT INCLUDES PRODUCT AND APPLICATION	NO, ONLY PRODUCT GUARANTEED, APPLICATOR GUARANTEE'S HIS WORKMANSHIP	NO, ONLY PRODUCT GUARANTEED, APPLICATOR GUARANTEE'S HIS WORKMANSHIP	NO, ONLY PRODUCT GUARANTEED, APPLICATOR GUARANTEE'S HIS WORKMANSHIP
VOC'S IN PRODUCT	NO, VOC'S IN PRODUCT	YES	YES	?
DIISOCYANATES/ ISOCYANATES	NO	YES, IN THE HARDENER	YES, IN THE HARDENER	?

HYGIENIC SOLUTIONS MMA HOTEL APPLICATION CHART

LOCATION	SYSTEM	SLIP RESISTANCE	COLOUR CHOICE
HOT KITCHEN	MMA COLOUR QUARTZ	R10 DRY AREAS R11 WET AREAS	LIGHT IN COLOUR (LIGHT GREY,BEIGE, BLUE) *
COLD KITCHEN	MMA COLOUR QUARTZ	R10 DRY AREAS R11 WET AREAS	LIGHT IN COLOUR (LIGHT GREY,BEIGE, BLUE) *
BAKERY	MMA COLOUR QUARTZ	R10 DRY AREAS R11 WET AREAS	LIGHT IN COLOUR (LIGHT GREY,BEIGE, BLUE) *
BUTCHERY	MMA COLOUR QUARTZ	R10 DRY AREAS R11 WET AREAS	LIGHT IN COLOUR (LIGHT GREY,BEIGE, BLUE) *
FISH AREA	MMA COLOUR QUARTZ	R10 DRY AREAS R11 WET AREAS	LIGHT IN COLOUR (LIGHT GREY,BEIGE, BLUE) *
LAUNDRY	MMA COLOUR FLAKES	R9/R10	OVER 200 RAL COLOURS TO CHOOSE FROM *
CORRIDORS	MMA COLOUR FLAKES/ MMA LIQUID VINYL	R9	OVER 200 RAL COLOURS TO CHOOSE FROM *
DRY STORE ROOMS	MMA LIQUID VINYL	R9	OVER 200 RAL COLOURS TO CHOOSE FROM *
WET STORE ROOMS	MMA LIQUID VINYL	R11	OVER 200 RAL COLOURS TO CHOOSE FROM *
PLANT & ELECTRICAL ROOMS	MMA PIGMENTED SYSTEM	R9	OVER 200 RAL COLOURS TO CHOOSE FROM *
DISH/VEG/POT WASH	MMA COLOUR QUARTZ	R11	LIGHT IN COLOUR (LIGHT GREY,BEIGE, BLUE) *
MAINTENANCE ROOMS	MMA PIGMENTED SYSTEM	R9	OVER 200 RAL COLOURS TO CHOOSE FROM *

* Please see our Hygienic Solutions colour charts for more information and colours

MUNICIPALITY REGULATIONS & KITCHEN CONSULTANT REQUIREMENTS

• Meets the Requirements

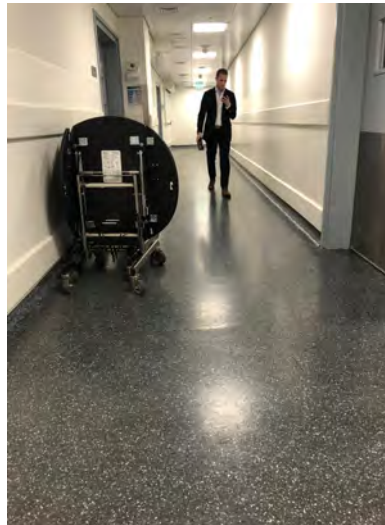
PROPERTIES	HYGIENIC SOLUTIONS MMA RESIN	EPOXY RESIN	POLYURETHANE RESIN	CERAMIC TILES
High temperature over 100°C	●	No, Only achieves 60°C	Only 9mm & 12mm achieves over 100°C	●
Thermal Shock	●	No, Will Crack and De-Laminate	●	●
Thermal Co- Efficient Expansion	●	No, Will Crack and De-Laminate	No, Requires Sealants	No, Requires Sealants Will Crack
High Impact Loads	●	No, Too Hard will chip at 65/70 N/mm2	Only 9mm & 12mm Suitable	No, Will Chip & Crack as Too Hard
100% Seamless	●	No, Requires Sealants Around Drains and Joints	No, Requires Sealants Around Drains and Joints	No, Has Grout Lines & Sealants Around the Drains
Steam Cleanable	●	No, Will Crack and De-Laminate	Only 9mm & 12mm Suitable	●
Naturally Anti- Bacterial	●	No, Requires an Additive	No, Requires an Additive	No, Requires an Additive
Suitable for Freezer at Low Temperatures	●	No, Will Crack and De-Laminate	No, Depends on Thickness	No, Will De-Bond & Pull Off
Different Slip Resistance Without Joints	●	No, Requires Joints that then Require Sealants	No, Requires Joints that then Require Sealants	No, Requires Joints & Grout Lines

HYGIENIC SOLUTIONS MMA RESINS HOTEL PROJECTS COMPLETED

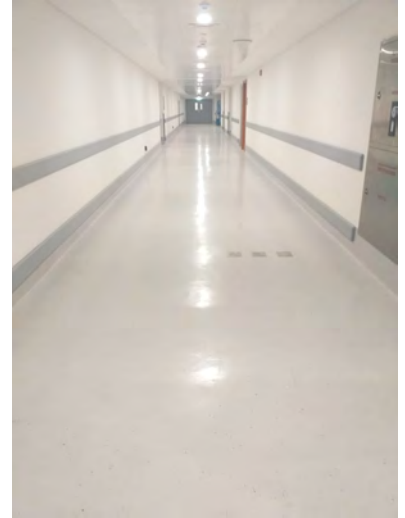
- QE2 Hotel
- Jumeirah Al Naseem
- Movenpick Grand Plaza
- Versace Hotel
- Rove Dubai Parks & Resorts
- Rove City Walk
- Jumeirah Beach Hotel
- Al Seef Hotel
- Coral Hotel
- Le Meridien Mina Seyahi
- One and Only Hotel
- Occidental Hotel
- Vida Dubai Creek & Harbour
- Vida Emirates Hills
- Vida Umm Al Quwain
- Wyndham Deira Waterfront
- Hotel indigo
- Dorchester, Business Bay
- Premier Inn
- Warner Brothers Hotel
- Four Seasons Hotel
- Al Bait Hotel, Sharjah
- Jadaf Hotel
- Edition Downtown



Hygienic Solutions MMA Seamless Colour Quartz for Kitchen & Heavy Duty Areas



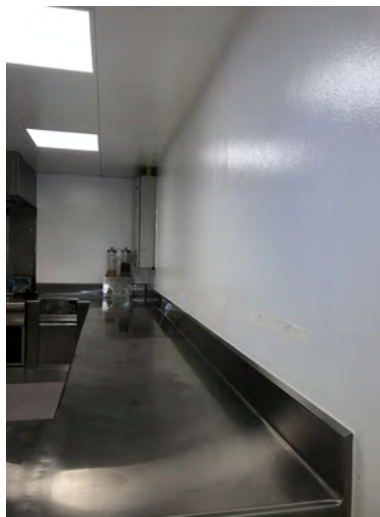
Hygienic Solutions MMA Seamless Colour Flakes for BOH Corridors and Staff Canteens



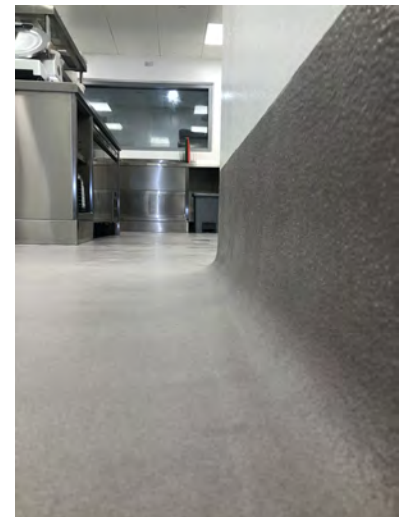
Hygienic Solutions MMA Liquid Vinyl System Applied to all B.O.H Corridors



Hygienic Solutions Traffic Deck Coating



Hygienic Solutions Seamless Naturally Anti-Bacterial Wall Coating



Hygienic Solutions MMA Seamless Colour Quartz Coving with no Joints

*Projects and photos used were completed using MMA

Visit HygienicMMAResins.com for Your Free Specifications
or Contact Luke: 058 545 0014
Email: Info@HygienicMMAResins.com