

SEAMLESS FAST DRYING TERRAZO

PRODUCT FEATURES

Hygienic Solutions Seamless Terrazzo is an Eco-friendly matrix material made from waste from Steel foundries, the product has no resin and no cement, this makes the system inert, non-shrink, non-crack unlike resin and cement-based products.

Made with different types of silica our secret formulation allows our seamless Terrazzo to dry and fully cure in less than 4 hours depending on ambient temperatures. Self-levelling allows us to apply at lower thicknesses which means less diamond grinding with the same wear resistance you would expect from a Terrazzo Floor.

WHERE TO USE

- Shopping Malls
- Hospitals
- Places of worship
- Palaces
- Schools
- Airports
- Office receptions
- Hotels front of house areas
- Factory receptions
- Any place where a high floor finish is required

BENEFITS OF THE SYSTEM

- Self-Levelling
- Non-Shrink
- Non-Crack
- Easy to Apply
- Any RAL Colour matrix
- Thin System 5mm Grinded Down to 4mm
- No Cement
- No Resin
- 100% Seamless
- Range of Aggregates Available to Suit any Design
- High Wear-ability
- Fully Guaranteed Including Application

PREPARATION TO SUBSTRATE

Ensure the surface is stable and has sufficient compressive strength, dry and free of all contamination. Mechanical surface preparation is recommended, for example shot blasting or a heavy grind. All undulations must be prepared and not missed if grinding. The surface must be crack free or cracks repaired with HS Epoxy repair filler.

APPLICATION GUIDE

Begin with substrate preparation as described above.

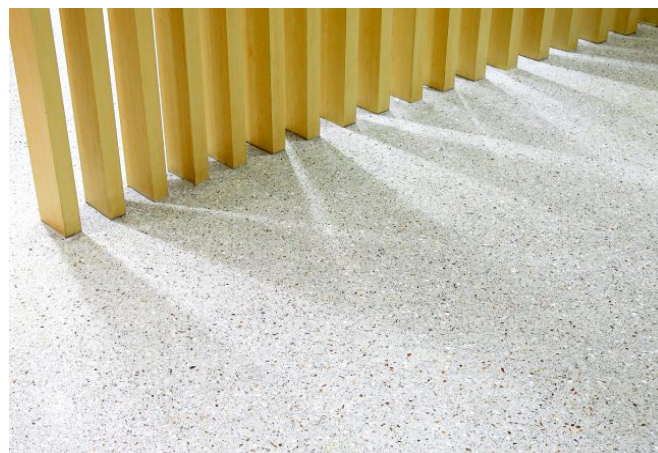
Apply Hygienic Solutions MMA primer with aggregate scatter.

Mix HS Industrial Powder 25kg to 6.5 litres of clean water and mix with a suitable hand drill or mixing machine (DLX mixing paddle) the material should be mixed for a minimum 2 minutes then leave to set for 3 minutes and then mixed for a further 1 minute. At the beginning of the mixing the mix is creamy do not add any further water, the material will become more fluid after the setting stage.

Pour the material and distribute with a screed rake or trowel to the intended thickness. Roll the fresh surface with a metal spiked roller to avoid pin holes from synthetic spike rollers. Consider the spikes to be long enough, with manual processing allow 5 minutes to be maintained between the end of the mixing time and application of the materials this minimises the rising of air bubbles within the poured materials.

To seal the system Apply Hygienic Solutions MMA Sealer coat.

Once applied keep all drafts and high winds off the floor finishes for the first 24 hours, do not cover the finished surface with foils or other materials.



TECHNICAL PROPERTIES		
PROPERTY	STANDARD TEST METHOD	RESULT
Strength Class	DIN EN 13813	CT-C40-F7
Application Thickness		Applied at 5mm, grind down to 4mm to expose the aggregates
Processing Temperature		Min +5°C / Max 35° C
Walkability		After 4 Hours
Light Loads		1 Day
Fully Loadable		4 Days
Mixing Ratios to Water		6.5L Clean Water to 25kg Powder
Compressive Strength		40N/mm2
Flexural Strength		7.5N/mm2
Elastic Modulus		10.2KN/mm2
Abrasion Resistance	BCA	AR 0,5
Processing time @ 20° C		60 Minutes
Bulk Density		1.1 KG/dm3
Fresh Mortar Density		2.0 KG/dm3

EN 13813 EN 13813 CT-C40-F7-AR0,5

Fire behavior	A1
Compressive strength	C40
Flexural strength	F7
Release of corrosive substances	CT

UAE OFFICE

KIZAD, Abu Dhabi, PO Box 126886
Email: info@HygienicMMAresins.com, Phone: +971 2 884 5673
www.HygienicMMAresins.com